

GIVE REEF FISH A FIGHTING CHANCE

RETURN 'EM RIGHT PROGRAM

WHAT IS IT?

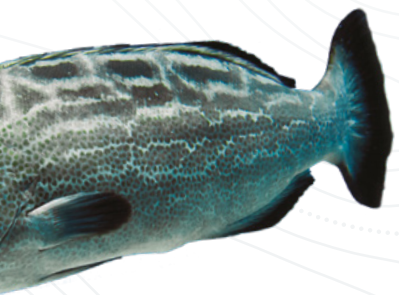
Return 'Em Right is a program that equips anglers with the knowledge and gear to increase survival of reef fish that are caught and released in the Gulf and South Atlantic.

WHY IT MATTERS.

Millions of fish are discarded each year, and many of those die. Best release practices help protect a resource for the next generation of anglers. Improving the survival of fish after release may show a positive impact on the stock.

WHAT CAN YOU DO?

Be a responsible angler by doing your part to ensure fish survive release, incorporate best release practices into your fishing plan, and encourage other anglers to use best practices and Return 'Em Right!



RESOURCES FOR ANGLERS

Access free training on best release practices, discounted release gear and more!



Scan this QR code or visit ReturnEmRight.org to take our free best release practices training.

Discounted release gear is available to eligible anglers who fish for reef fish in the Gulf & South Atlantic.

Follow Us!



@ReturnEmRight
Website: ReturnEmRight.org
Email: info@ReturnEmRight.org



THE FIGHT DOESN'T END AT THE SURFACE



**RETURN 'EM
RIGHT**

EARN ANOTHER FIGHT



**RETURN 'EM
RIGHT®**

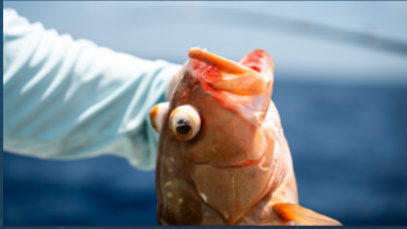
WHAT IS BAROTRAUMA?

Barotrauma is a pressure-related injury that occurs when gases expand in the tissues and organs of fish, causing internal damage and often preventing them from swimming back to depth. It commonly affects reef fish brought up from depths of 50 feet or greater, but can also affect some species in even shallower water.

KNOW THE SIGNS



STOMACH PROTRUDING OUT OF THE MOUTH



BULGING EYES



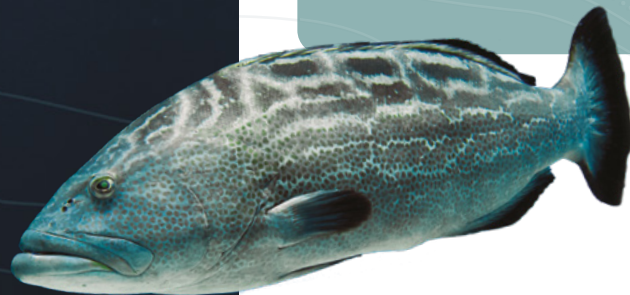
BLOATED BELLY



DISTENDED INTESTINES



BUBBLING SCALES



KNOW THE SOLUTIONS.

DESCENDING DEVICES

LIP CLAMP

A device that attaches to the fish's lower jaw that is used in combination with a heavy weight to return fish to depth. As you drop the fish back to the bottom, the device will either automatically or mechanically release, depending on the type.



INVERTED HOOK

An inverted, barbless hook is inserted either where the original hook hole was, or you can gently pierce the soft tissue under the fish's lower jaw. Once the fish is dropped to the desired depth by using a heavy weight, you simply reel up and the hook slides out of the fish's mouth.



WEIGHTED CRATE

Descending devices that are made using weighted crates, baskets or cages. These weighted devices are capable of releasing multiple fish at a time. Consider having a multi-functional device such as a weighted crate that can be used to store gear and also release fish.

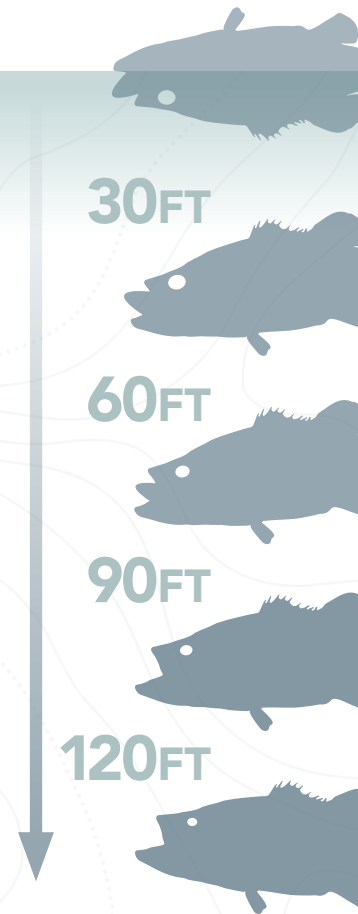


VENTING TOOLS

A sharpened and hollow instrument that penetrates the fish's abdomen in order to release the excess gases accumulated in the body cavity. Anglers must understand exactly where to pierce the abdomen so that no internal organs are further injured (two or three inches past the base of the pectoral fin).



**Under the right conditions, descending devices are the preferred method for releasing fish showing signs of barotrauma.*



It is our responsibility to ensure the fish we release live to fight another day.

DEPTH MATTERS

Barotrauma typically occurs in depths of 50 feet or greater, but can occur in shallower depths depending on the species caught.